



Global IT Supplier  
Enterprise Technology  
Products & Services Catalogue





**02 /** LAN and Wi-Fi Access Switches

**03 /** Small Core and Distribution Switches

**03 /** High Speed Core and Distribution Switches

**04 /** Wi-Fi Indoor Access Points

**04 /** Wi-Fi Outdoor Access Points

**05 /** Network Security

**06 /** Routers, SD-WAN and Multi-Cloud Connections

**08 /** Collaboration, Audio & Video Equipment

**11 /** Power, Rack Cabinets, Cabling

**13 /** Grandmetric Services

# Enterprise Technology

## Products & Services Catalogue

Dear Partner,

as a Next Generation Integrator and IT Hardware authorized Supplier we are pleased to present an overview of best-in-class Enterprise Technology Products & Services Catalogue.

You'll find here the latest lines of Cisco switches, Wi-Fi access points and controllers as well as network security solutions, routers, and SD-WAN devices.

On the communication side, we recommend best-in-breed Poly's conference suite that integrates beautifully with most used communication platforms such as Microsoft Teams or Zoom.

Apart from network devices, our catalogue comprises Rack cabinets, cabling and UPS to keep your IT equipment safe, secure and perfectly cabled.

Sincerely Yours,

Marcin Biały, Advisory Architect & Board Member at Grandmetric



vmware®

NetApp



APC



### Our Focus

# 01

Customer  
satisfaction

# 02

On-time and reliable  
hardware delivery

# 03

Global presence -  
Master agreements,  
warehouse spaces,  
local partners

# 04

Value added reselling,  
Inventory & Services  
in one place!

# 05

Merchant Portal -  
Grandmetric Spaces,  
New platform



# Enterprise Networks

## **Cisco Authorized Partner**

## 1/ LAN and Wi-Fi Access switches



### Cisco Catalyst 9200 Series

**Purpose:** Wired access and Wi-Fi access point

**Location:** Distribution rack cabinets, Server rooms

**Main functions:** Switching, PoE, Stacking, 10G and 1G Uplink modules, Basic routing capabilities, Network security features, Redundant power supplies, Cisco DNA ready

Check  
a full description



## 2/ Small Core and Distribution switches



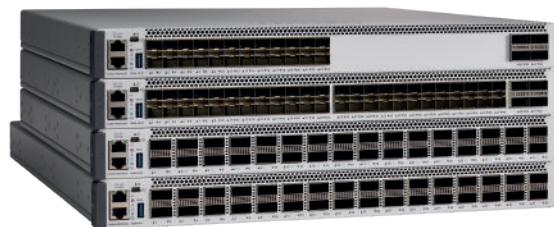
### Cisco Catalyst 9300 Series

**Purpose:** Collapsed Core and Aggregation for Campus

**Location:** Distribution rack cabinets, Server rooms

**Main functions:** High-capacity switching, Full L3 routing, PoE, Stacking, 1/10/40G/mGig ports, Network security features, Redundant power supplies, Cisco DNA-ready, SDA Foundation

## 3/ High Speed Core and Distribution switches



### Cisco Catalyst 9500 Series

**Purpose:** High Speed Core for Enterprise Campus

**Location:** Server rooms

**Main functions:** 1RU fixed form, High-capacity Switching (Tbps), Full L3 Routing, Virtual Stacking, 10/40/100G ports, Network virtualization and security features, Redundant power supplies, Cisco DNA-ready, SDA Core

## 4/ High Speed Core and Distribution Switches



### Cisco Catalyst 9400 and 9600 Series

**Purpose:** High Speed Modular Core for Enterprise Campus

**Location:** Server rooms

**Main functions:** Modular High-capacity Switching (Tbps) with line cards, Full L3 Routing, Virtual Stacking, 1/10/40/100G ports, Network virtualization and security features, Redundant power supplies and supervisors, Cisco DNA ready, SDA Core

## 5/ Wi-Fi Indoor Access Points

Check  
a full description



### Cisco Catalyst 9100 Series Access Points

**Purpose:** Efficient Wi-Fi access for users and devices in high-density environments

**Location:** Open spaces, Office, Corridors, Warehouses, Production Plants, Indoor

## 6/ Wi-Fi Outdoor Access Points



### Cisco Catalyst 9124 Series Access Points

**Purpose:** Efficient Wi-Fi access for outdoor and rugged areas

**Location:** Outdoor and Industrial areas

**Main functions:** 802.11ax (Wi-Fi 6), 802.11abgnac, PoE powered, Cisco DNA-ready, Bluetooth Low-Energy, MIMO, Controller based, Cisco RF ASIC, Multigigabit Uplink 2.5Gbps, Internal Omnidirectional and Directional antennas, External antennas, working with Cisco 9800 controllers, Operating temperature: -40° to 149°F (-40° to 65°C), Operating altitude test: 17,000 ft

## 7/ Enterprise Wi-Fi Controllers



### Cisco Catalyst 9800 Series Wi-Fi Controllers

**Purpose:** Wi-Fi controller. Efficient Enterprise Wi-Fi management

**Location:** Server rooms, Cloud, Edge Computing

**Main functions:** Up to 6000 managed Access Points, support for Wi-Fi 6, Up to 80 Gbps throughput (central switching mode) and 64 000 Wi-Fi clients, Cisco DNA-ready, Cisco Identity Services Engine, Prime, CMX, DNA Spaces integrations, ESXi, Hyper-V, KVM, NFVIS, AWS, GCP support

Check  
a full description



## 8/ Network Security



### Network Admission Control (NAC)

#### Cisco Identity Services Engine (ISE)

**Purpose:** Network Admission Control (NAC) and security policy enforcement

**Location:** Server rooms, Edge Computing

**Main functions:** Security Policy system used for securing network access with 802.1x for wired and wireless access, Provides Guest access and secured network access unification, Delivers tools for creating comprehensive Authentication, Authorization and Accounting (AAA) that are easy to manage and monitor IT administrators, ISE is a single point of trust for all kind of IT infrastructure access including VPN, Compatible with Cisco Catalyst series switches, Wireless AP and controllers, Cisco Firepower and ASA firewalls, Anyconnect clients, provides functions such Endpoint Profiling,



**Contact Sales Executive**  
For availability and price

**EU: +48 61 271 04 43**  
**US: +1 302 691 9410**



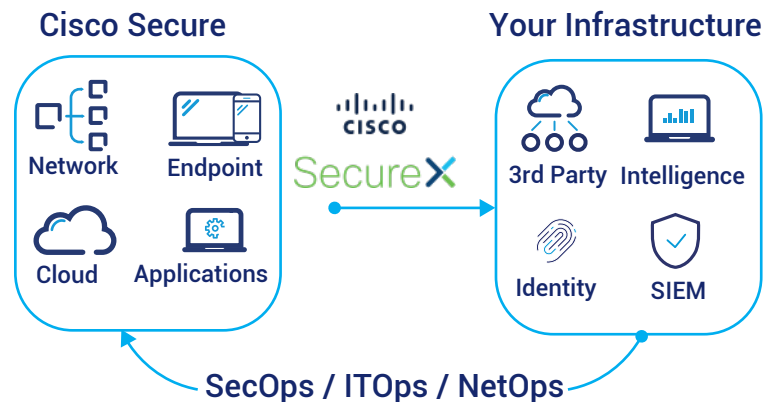


## Cisco Firepower 1000 Series & 3000 Series

**Purpose:** Securing Internet Edge for small and medium companies and branches

**Location:** Server Rooms

**Main functions:** Managed by Web interface (Cisco Device Manager) or Firepower Management Center, Support Stateful Firewalling, Application protection and recognition with AVC over 4k apps, Geolocation, Next- Generation IPS (Snort based), Anti-Malware Protection for Network (AMP), URL (280M+ URLs) and category filtering (80M+ Categories), Identity Firewalling including pxGrid and Cisco ISE integration, Cisco Security Intelligence powered by Talos, Remote access VPN with Anyconnect (SSL and IKEv2), Site2Site VPN, Supports up to 3 Gbps throughput, Various 1G and



## Cisco SecureX Platform

**Purpose:** Unified visibility, intuitive automation, and robust security for entire Cisco security portfolio.

**Main functions:**

- Orchestration
- Threat response
- Device insights
- Ribbon & single sign on (SSO)

**Integrations:**

- Cisco Umbrella
- Cisco Secure Firewall
- Cisco Secure Endpoint
- Cisco Secure Workload
- Cisco Secure Access by Duo
- Cisco Defence Orchestrator
- Cisco Secure Web Appliance
- Cisco Secure Malware Analytics
- Cisco Secure Network Analytics
- Cisco Secure Cloud Analytics

EU: +48 61 271 04 43  
US: +1 302 691 9410

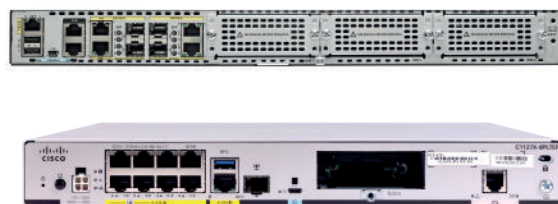
Contact Sales Executive  
For availability and price





## 11/ SD-WAN and Multi-Cloud Connections

### Cisco C1000, ISR4000, C8000 and ASR1000 series routers



**Purpose:** Internet Edge and WAN connectivity, SD-WAN foundation

**Location:** Server Rooms in HQ, Branch Racks

**Main functions:** Routing platforms used for efficient and reliable routing on Internet Edge (i.e. for BGP peering), used for the foundation for efficient and secured Wide Area Networks (WAN) connection Enterprises globally. Cisco ISR, C8000 and C1000 routers support mature technologies like Dynamic Multi-Point VPNs (DMVPN), Group Encrypted Transport VPN (GETVPN), FlexVPN as well as the rising and state of the art Cisco Software-Defined WAN (SD-WAN) networks, reliable, flexible and controller-managed next generation overlays. Various models offer flexible routing platforms starting from small factors C1000 dedicated for offices (SOHO) equipped with LTE and Wi-Fi modules, branches with ISR4000, C8200 and C8500 or ASR1000 platforms for Headquarters and efficient Internet Edge BGP peering.



**Contact Sales Executive**  
For availability and price

**EU: +48 61 271 04 43**  
**US: +1 302 691 9410**



Collaboration, Audio & Video

**Poly Authorized Partner**



## 1/ Poly C60 Series

**Purpose:** Video & Audio Conferencing

**Location:** Conference Rooms

**Main functions:** Microsoft Teams certified, Skype for Business Certified, Open SIP, Multi-touch screen, 5-inch LCD display, On-screen keyboard, Bluetooth 5.0, Loudspeaker, Codecs G.711, G.719, G.722, G.729, Poly Acoustic Clarity, Voice Activity Detection, Up to three lines, Call transfer, hold, divert, pickup, waiting, Shared Call/Bridge appearance, Do-Not-Disturb function, Wi-Fi 2.4GHz, 5GHz, 2x LAN 10/100/1000 Base ports IN/OUT, OUT LAN with 802.3af, Poly Lens Management, Poly Zero Touch Provisioning, Security: 802.1x, TLS, Password Login, Wi-Fi Encryption



## 2/ Poly CCX 400, 500, 600 Series

**Purpose:** Business Media desk phones for Reception, Management and Employees

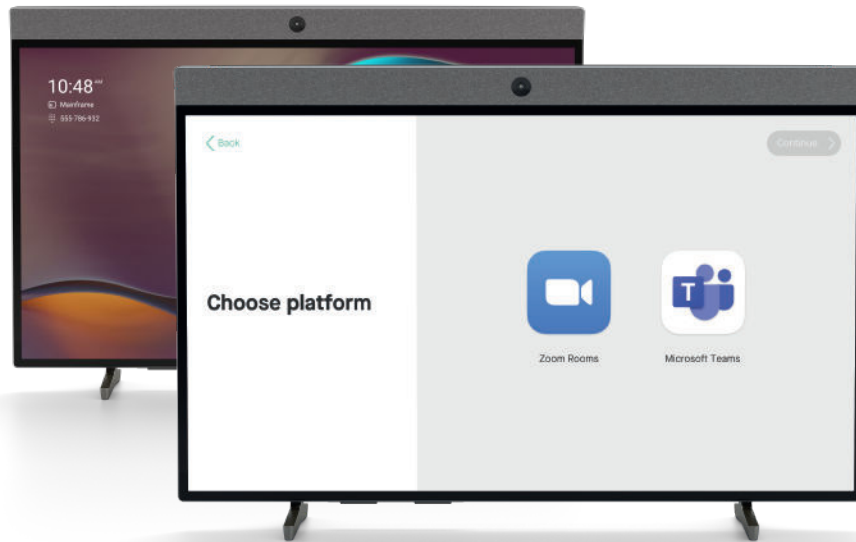
**Location:** Regular desks, reception desks, management board desks

**Main functions:** Microsoft Teams certified, Skype for Business Certified, SIP, Multi-touch screen, 5-inch LCD display, On-screen keyboard, Bluetooth 5.0, Loudspeaker, Codecs G.711 (A-law and  $\mu$ -law), G.722 (HD Voice), G.729AB, Poly Acoustic Clarity, Poly HD Voice technology delivers lifelike voice quality, Voice Activity Detection, Dedicated RJ-9 headset port, Hearing aid compatibility to ITU-T P.370 and TIA 504A standards, USB Headset support, Wi-Fi 2.4GHz, 5GHz, 2x LAN 10/100/1000 Gigabit Ethernet switch, QoS, Security:



**Contact Sales Executive**  
For availability and price

**EU: +48 61 271 04 43**  
**US: +1 302 691 9410**



### 3/ Neat Board

**Purpose:** Medium and Large Conference Rooms

**Mounting:** Floor stand with optional wheels, wall mount or table stand.

**Main functions:** Microsoft Teams & Zoom compatibility, immersive 4K 65-inch multi-touch screen, 120 deg FOV wide angle camera, 12MP capture resolution, 4x digital zoom (8x optional), 5 mic array, built-in audio and video processing, acoustic sensors that respond to your presence, Bluetooth, air quality sensor, Wi-Fi.

### 4/ Neat Bar Pro & Pad

Capable of driving three large screens, it enables you to see people and content together more clearly. Uncompromising audio and video quality give you an incredibly immersive, natural meeting experience throughout any space.

**Neat Bar Pro main functions:** 70 to 130 deg horizontal field of view, 50MP capture resolution, 16x digital zoom, 16 mic array, opposing drivers, 3 full-range speakers, triple screen support, sensors.

**Neat Pad main functions:** 8" HD touch screen, LED status indicator, wireless sharing, 2 microphones, PoE support, Wi-Fi, Light sensor, Orientation sensor, Air quality sensor.

EU: +48 61 271 04 43  
US: +1 302 691 9410

Contact Sales Executive  
For availability and price



# Power, Racks & **Cabling**

## 1/ UPS



### APC Smart-UPS

**Purpose:** One of the most popular UPS in the world for servers, storage and network power protection

**Location:** Server rooms: Rack, Tower

**Main functions:** Cloud monitoring, Pure Sinewave, Intelligent Battery Management, High-efficiency Greenmode, Emergency Power Off

## 2/ Rack Cabinets & Net Shelters



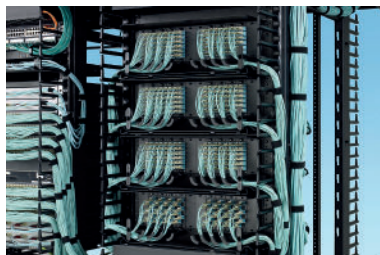
### APC Net Shelter

**Location:** Non-dedicated IT spaces

**Main functions:** A soundproofed server room in a box which allows for IT deployment wherever and whenever it is needed, saving space, cost and deployment time. Accommodates 12-38U.

We also offer cabinets by Vertiv, Panduit, Eaton

## 3/ Cabling



### Panduit, Reichle de Masari, CobiCabling

**Purpose:** HD Flex Fiber Cabling System

**Location:** Data Center

**Main functions:** Integrated Cable Management, High Density (144 fibers/12 cassettes per rack unit), Push-pull LC connectors, Side trunk cable management, Front and back cassette accessibility, Enclosures and panels are adaptable between 6 and 12-port configurations.

EU: +48 61 271 04 43  
US: +1 302 691 9410

Contact Sales Executive  
For availability and price



# Logistics & Distribution Centers





# Professional services

Apart from delivering the best-in-class infrastructure hardware, we serve our clients with experienced professional services able to solve complex challenges in **global, multi-regional network environments**.

## A wide range of Grandmetric professional services contains:

- Network Design
- SD-WAN Delivery
- Wireless Site Survey
- Enterprise Security Design
- Security Audits
- Managed Services
- Virtualization and Containerization
- Systems Migration
- Network Automation
- Cloud Services



# Industry-proven experts

Grandmetric Advanced Services team holds the most recognizable certificates and specializations that demand **broad engineering knowledge and expertise**.

## Partnership



vmware®



FORTINET®



neat.



## Certificates



# Financing policy

## Payment deferration up to 60 days

- Reduces the pressure of constant repayment
- Improves cashflow

## Cisco Easy Lease

- 36 monthly payments with no upfront cost
- Applicable for hardware, software, licensing, and services – everything under one agreement
- After 36 months, you can return the assets or pay 1% to own them
- For purchases starting from 1000EUR

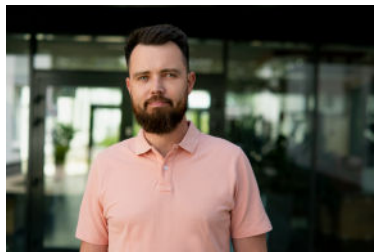


# Professional care and relations

Working with **Grandmetric**, you can count on both business and technical support.

We have access to **more than 100 thousand** models of top-notch hardware.

**Jakub Fabiś**  
**Dedicated Key Account Manager**  
**Sales Executive**



E-business card



Coordinates the purchasing process,  
making sure your order is delivered on time (or faster).

phone: **+48 722 362 447**

email: [jakub.fabis@grandmetric.com](mailto:jakub.fabis@grandmetric.com)

**Marcin Biały**  
**Dedicated Technical Account Manager**  
**Advisory Architect**



E-business card



Experienced engineer who accompanies you and your organization  
to help you overcome technological challenges in the most  
productive way possible.

phone: **+48 512 558 509**

email: [marcin.bialy@grandmetric.com](mailto:marcin.bialy@grandmetric.com)



[sales@grandmetric.com](mailto:sales@grandmetric.com)



[www.grandmetric.com](http://www.grandmetric.com)

### Polish Office

**Grandmetric Sp. z o.o.**



ul. Metalowa 5

60-118 Poznań



+48 61 271 04 43

### US Office

**Grandmetric LLC**

Brookfield Place Office

200 Vesey Street, New York, NY 10281

+1 302 691 9410